

Innorack® IVC Mouse 3.5

HIGH-PERFORMANCE IVC RACK DESIGNED FOR USE WITH THE SIMPLICITY OF OUR DISPOSABLE IVC CAGES

MAIN FEATURES

- » Dual-HEPA filtered ventilation system
- » Positive/negative modes of operation
- » Double or single-sided rack options
- » Many column/row configurations possible
- » Independent control of airflow on each side

DYNAMIC DIGITAL CONTROLLER

- » Dynamically maintains settings on both supply and exhaust blowers
- » Quick-look color display for easy status monitoring

ERGONOMIC DESIGN

- » Lightweight rack (largest configuration weighs 500 lbs) and blowers (15 lbs)
- » Full cage visibility
- » Locking swivel wheels for easy maneuverability

EASY CLEANING AND MAINTENANCE

- » Continuous shelf design and smooth beveled surface allow for easy cleaning
- » Quick disconnect blowers
- » VHP and chlorine dioxide compatible (autoclave-compatible upon request)

IMPROVED ANIMAL WELFARE

- » Low-vibration ventilation system creates a stress-free animal environment
- » New blower design with reduced noise level operation



Image 1. Double-sided Innorack® IVC Mouse 3.5, 176 cage positions

COLUMNS	6	7	8		
	CAGE POSITIONS ¹			HEIGHT ²	
# OF ROWS	9	108	126	144	64.7"
	10	120	140	160	70.9"
	11	132	154	176	77.1"
	12	144	168	192	83.3"
WIDTH	62.8"	72.1"	81.4"		

* Depth: 31" for double-sided; 18" for single-sided rack

¹ Single-sided rack has half the number of cage positions shown above

² Add 12.6" to height for blowers

* Additional configurations available, call Innovive for more information

Table 1. Innorack® IVC Mouse 3.5 dimensions and cage positions



To learn more about Innovive IVC racks: www.innovive.com/ivc-mouse-racks.html

V03/20

Innocage® IVC Mouse

1 cage =
5 mice **BPA-FREE**

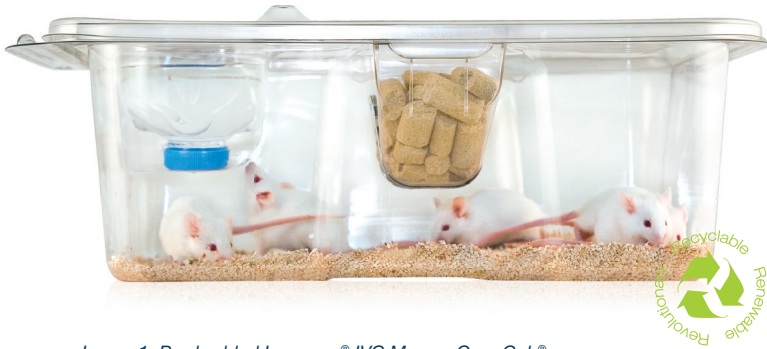


Image 1. Pre-bedded Innocage® IVC Mouse, Corn Cob®

DISPOSABLE RESEARCH-READY CAGING
TO ACCOMMODATE ALL TYPES OF RESEARCH

8.8 oz cage | sized for 5 mice | 1.9 oz food tray
Interior dimensions: 81 in² floor space, 5" of headroom
Outside dimensions: 14.7"L x 9.2"W x 5.5"H (max)
Universal Euro Type II Long | 100% PET. Recyclable.
Watering options: Aquavive®, gels, pouches, autowatering

- » Flexible, standardized, research-ready caging
- » Patented lightweight caging
- » All plastic is 100% high viscosity PET, fully recyclable
- » 14-day changes
- » Completely disposable end-to-end solution
- » Closed-loop recycling services available

BUILDING A COMPREHENSIVE CAGE SET – CHOOSE FROM THE OPTIONS BELOW:

1. CAGE BOTTOMS



Empty



Pre-bedded,
Corn-Cob



Pre-bedded,
Alpha-Dri®



Pre-bedded, Corn-Cob or
Alpha-Dri® & Innorichment™

2. IVC CAGE LIDS

* Static and transport lid options available



IVC Standard



IVC Dual Filter



IVC Containment



IVC Large Filter

3. FEEDER AND ACCESSORIES



Plastic Feeder



Hybrid Feeder



Innorichment™



Innodome &
Innowheel

4. WATERING SOLUTIONS



Aquavive® Empty,
300 mL



Aquavive® Pre-filled,
300 mL



Aquavive® Amber,
300 mL

All Innovive products are delivered double-bagged and irradiated.

To learn more about Innovive mouse caging products: www.innovive.com/mouse-products.html

