

Innorack® IVC Mouse 3.5

HIGH-PERFORMANCE IVC RACK DESIGNED FOR USE WITH THE SIMPLICITY OF OUR DISPOSABLE IVC CAGES

MAIN FEATURES

- » Dual-HEPA filtered ventilation system
- » Positive/negative modes of operation
- » Double or single-sided rack options
- » Many column/row configurations possible
- » Independent control of airflow on each side

DYNAMIC DIGITAL CONTROLLER

- » Dynamically maintains settings on both supply and exhaust blowers
- » Quick-look color display for easy status monitoring

ERGONOMIC DESIGN

- » Lightweight rack (largest configuration weighs 227 kg) and blowers (7 kg)
- » Full cage visibility
- » Locking swivel wheels for easy maneuverability

EASY CLEANING AND MAINTENANCE

- » Continuous shelf design and smooth beveled surface allow for easy cleaning
- » Quick disconnect blowers
- » VHP and chlorine dioxide compatible (autoclave-compatible upon request)

IMPROVED ANIMAL WELFARE

- » Low-vibration ventilation system creates a stress-free animal environment
- » New blower design with reduced noise level operation



Image 1. Double-sided Innorack® IVC Mouse 3.5, 176 cage positions

| COLUMNS | 6 | 7 | 8 | | |
|------------------|-----------------------------------|----------|----------|---------------------------|----------|
| | CAGE POSITIONS¹ | | | HEIGHT² | |
| # OF ROWS | 9 | 108 | 126 | 144 | 164.3 cm |
| | 10 | 120 | 140 | 160 | 180.1 cm |
| | 11 | 132 | 154 | 176 | 195.8 cm |
| | 12 | 144 | 168 | 192 | 211.6 cm |
| WIDTH | 159.5 cm | 183.1 cm | 206.8 cm | | |

* Depth: 79.5 cm for double-sided; 45.7 cm for single-sided rack

¹ Single-sided rack has half the number of cage positions shown above

² Add 32.0 cm to height for blowers

* Additional configurations available, call Innovive for more information

Table 1. Innorack® IVC Mouse 3.5 dimensions and cage positions



To learn more about Innovive IVC racks: www.innovive.com/ivc-mouse-racks.html

V03/20

Innocage® IVC Mouse

DISPOSABLE RESEARCH-READY CAGING
TO ACCOMMODATE ALL TYPES OF RESEARCH

1 cage =
5 mice BPA-FREE

260 mL cage | sized for 5 mice | 56 mL food tray

Interior dimensions: 205.7 cm² floor space, 12.7 cm of headroom

Outside dimensions: 37.3 cm length x 23.4 cm width x 14.0 cm height (max)

Universal Euro Type II Long | 100% PET. Recyclable.

Watering options: Aquavive®, gels, pouches, autowatering

- » Flexible, standardized, research-ready caging
- » Patented lightweight caging
- » All plastic is 100% high viscosity PET, fully recyclable
- » 14-day changes
- » Completely disposable end-to-end solution
- » Closed-loop recycling services available

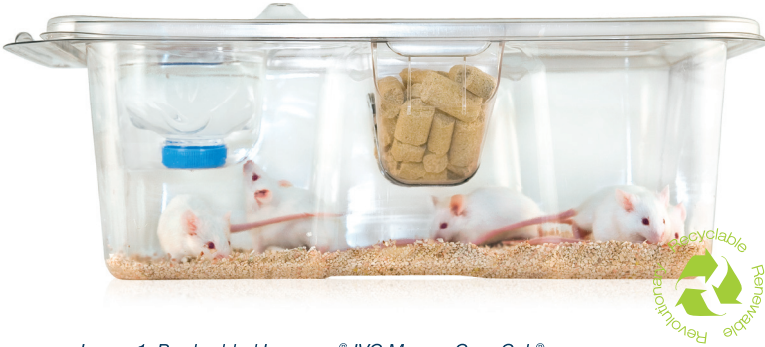


Image 1. Pre-bedded Innocage® IVC Mouse, Corn Cob®

BUILDING A COMPREHENSIVE CAGE SET – CHOOSE FROM THE OPTIONS BELOW:

1. CAGE BOTTOMS



Empty



Pre-bedded, Corn-Cob



Pre-bedded, Alpha-Dri®



Pre-bedded, Corn-Cob or Alpha-Dri® & Innorichment™

2. IVC CAGE LIDS

* Static and transport lid options available



IVC Standard



IVC Dual Filter



IVC Containment



IVC Large Filter

3. FEEDER AND ACCESSORIES



Plastic Feeder



Hybrid Feeder



Innorichment™



Innodome & Innowheel

4. WATERING SOLUTIONS



Aquavive® Empty, 300 mL



Aquavive® Pre-filled, 300 mL



Aquavive® Amber, 300 mL

All Innovive products are delivered double-bagged and irradiated.

To learn more about Innovive mouse caging products: www.innovive.com/mouse-products.html

